
THE KING HUNT

Mato Jelic



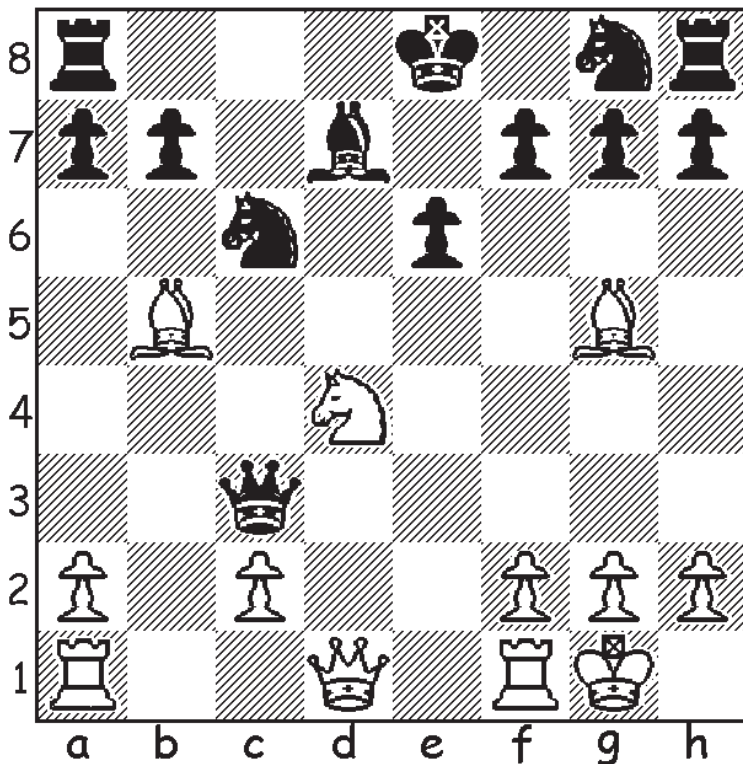
Annihilating the defences protecting the king

(10) Mikhail Tal - Wolfgang Uhlmann

Moscow 1971

French defence: Tarrasch variation

1.e4 e6 2.d4 d5 3.Nd2 c5 4.Ng3 Nc6 5.Bb5 dxe4 6.Nxe4 Bd7 7.Bg5 Qa5+ 8.Nc3 cxd4
9.Nxd4 Bb4 [9...Be7 would be better] 10.0-0 Bxc3 11.bxc3 Qxc3 WHITE TO MOVE



Black is a pawn up but behind in development. **12.Nf5** first surprise **12...exf5** **13.Re1+** Tal sacrificed the knight to open the e file for the rook. **13...Be6** **14.Qd6** Black king is sweating in the presence of Tal's queen. **14...a6** **15.Bd2** **Qxc2** **16.Bb4** **axb5** Black is two knights and two pawns up. If only he can survive the attack. **17.Qf8+** **Kd7** Which rook to play to d1? **18.Red1+** **Kc7** **19.Qxa8** Black resigned **19...Qe4** **20.Rac1** **Bd5** **21.Ba5+** **Kd6** **22.f3** **Qe3+** **23.Kh1** **Nxa5** **24.Qxa5** **Nf6** **25.Qc7+** **Ke6** **26.Re1** Black could have put up a longer fight but he didn't believe he would have a chance. So he resigned at move 19. **1-0**

(26) Itze - Reinte

Germany 1925

King's gambit: accepted. Salvio gambit

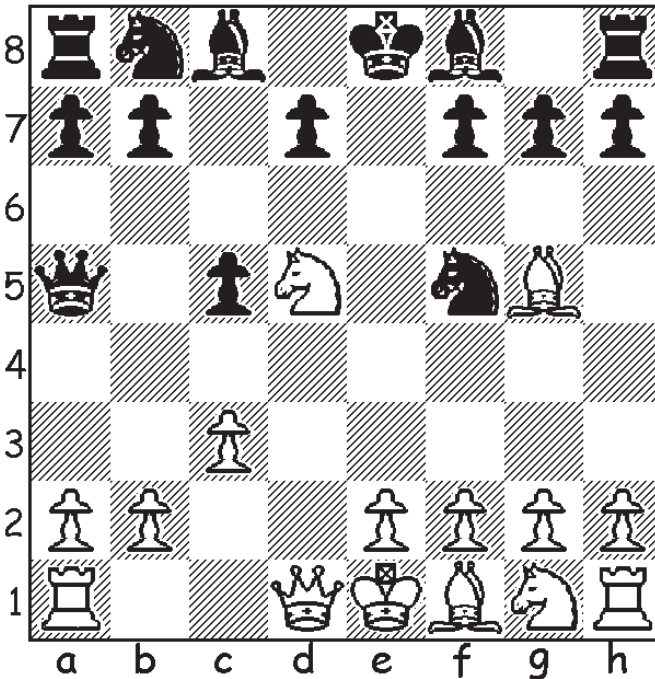
1.e4 e5 2.f4 exf4 3.Nf3 g5 4.Bc4 g4 5.Ne5 Qh4+ 6.Kf1 Bg7 7.Nxf7 d5 8.Bxd5 Bd4 9.Qe1 g3 10.h3 f3 11.Nxh8 BLACK TO MOVE 11...Bxh3 12.Rxh3 Qxh3 13.gxh3 g2# 0-1

(27) Yermolinsky - Tate

Reno 2001

Schmid Benoni

1.d4 c5 2.d5 e6 3.Nc3 exd5 4.Nxd5 Ne7 5.Bg5 Qa5+ 6.c3 [Better is 6.Bd2] 6...Nf5? [Better is 6...Nxd5] . WHITE TO MOVE



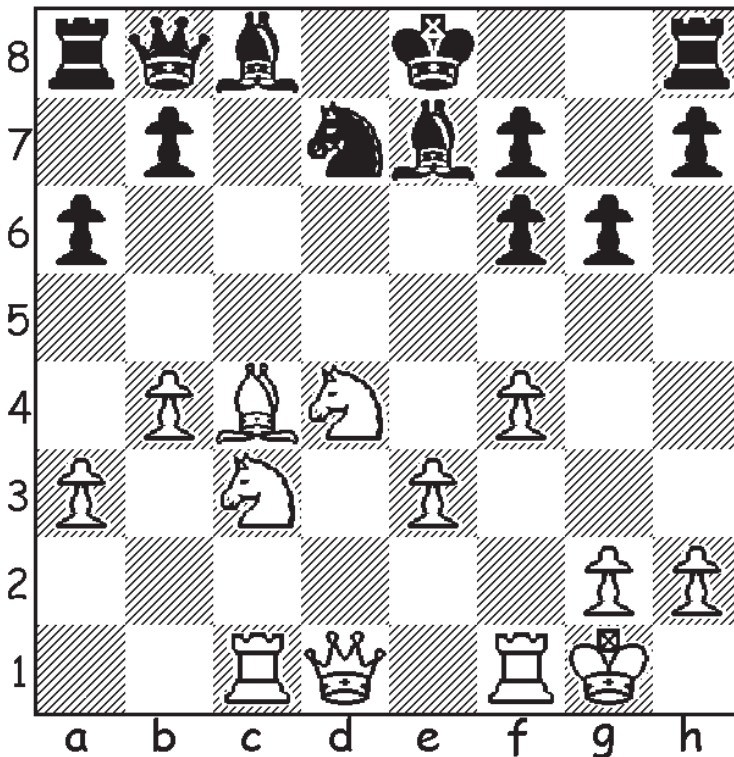
7.Qa4! Like thunder from a clear sky 7...Qxa4 8.Nc7#

(49) Tigran Vartanovich Petrosian - Viktor Korchnoi

Curacao (Candidates) 1962

English opening: symmetrical. Anti-Benoni variation

1.c4 c5 2.Nf3 Nf6 3.d4 cxd4 4.Nxd4 g6 5.Nc3 d5 6.Bg5 dxc4 7.e3 Qa5 [7...Bg7 is good alternative move] 8.Bxf6 exf6 9.Bxc4 Bb4 10.Rc1 a6 11.0-0 Nd7 12.a3 Be7 13.b4 Qe5 [13...Qxa3 14.Nd5+/-] 14.f4 Qb8 [14...Qxe3+ 15.Kh1 0-0 16.Nd5 Qe4 17.Re1+/-] WHITE TO MOVE



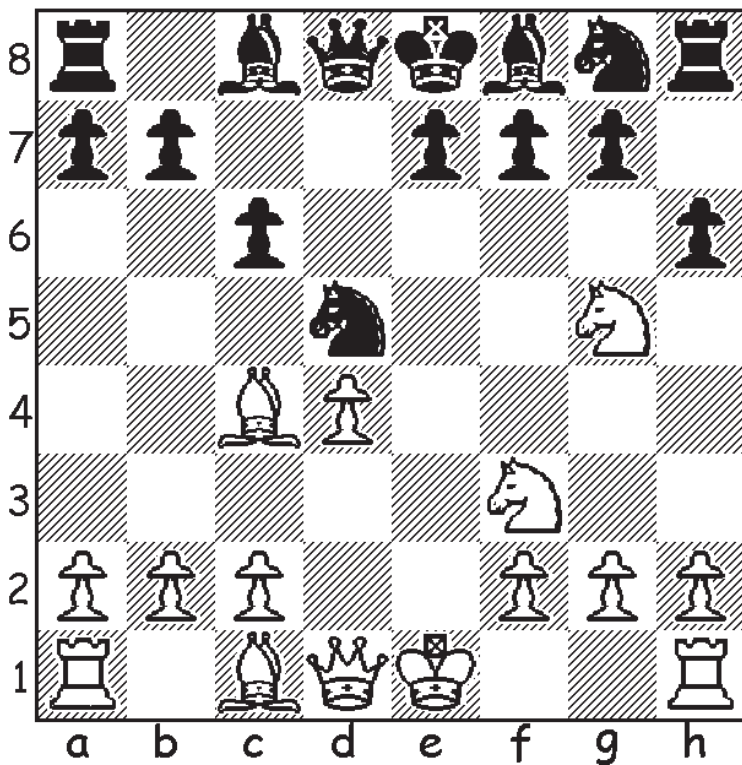
15.Bxf7+ Kxf7 16.Qb3+ Ke8 17.Nd5 Bd6 18.Ne6 b5 19.Ndc7+ Ke7 [19...Bxc7 20.Nxc7+ Kd8 21.Rfd1+/-] 20.Nd4 Kf8 21.Nxa8 Black resigned 1-0

(74) Andres Vooremaa - Lvik

Estonia 1962

Caro-Kann defence: Karpov variation

1.e4 c6 2.d4 d5 3.Nc3 dxe4 4.Nxe4 Nd7 5.Bc4 Ndf6 6.Ng5 Nd5 [6...e6 would be better]
7.N1f3 h6? [Better is 7...g6; 7...Ngf6?! 8.Ne5 Be6 9.Nxe6 fxe6 White is better] WHITE TO MOVE



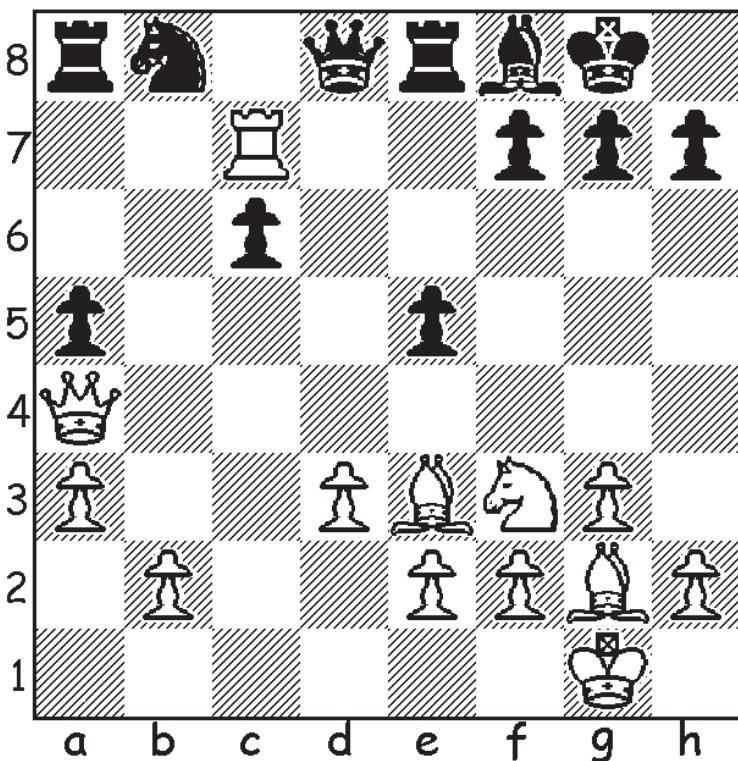
8.Nxf7! Kxf7 9.Ne5+ Ke6 [9...Ke8 10.Qh5+ g6 11.Qxg6#] 10.Qg4+ Kd6 11.Nf7+ Black resigned 11...Kc7 12.Qg3+ Kd7 13.Nxd8 1-0

(125) Mikhail Botvinnik - Lajos Portisch

Monte Carlo (Monaco) 1968

English opening: King's English. Two knights' variation

1.c4 e5 2.Nc3 Nf6 3.g3 d5 4.cxd5 Nxd5 5.Bg2 Be6 6.Nf3 Nc6 7.0-0 Nb6 8.d3 Be7 9.a3 a5 10.Be3 0-0 11.Na4 Nxa4 12.Qxa4 Bd5 13.Rfc1 Re8 14.Rc2 Bf8 15.Rac1 Nb8 Idea is to trap white rook after Rxc7 16.Rxc7 Bc6 17.R1xc6 bxc6 [17...Nxc6 18.Rxf7 Kxf7 19.Qc4+ Ke7 20.Bg5+-]. Interesting position. White has no pieces on his first rank and all Black's pieces are on the eighth rank. WHITE TO MOVE



18.Rxf7 h6 [18...Kxf7 19.Qc4+ Kg6 20.Qe4+ Kf7 21.Ng5+ Kg8 (21...Kf6 22.Qf3+ Kg6 23.Qf7+ Kh6 24.Bf3 Bd6 25.Qh5#) 22.Qxh7#] 19.Rb7 Qc8 20.Qc4+ Kh8 21.Nh4 Qxb7 22.Ng6+ Kh7 23.Be4 Bd6 24.Nxe5+ g6 25.Bxg6+ Kg7 26.Bxh6+ Black resigned 26...Kxh6 27.Qh4+ Kg7 28.Qh7+ Kf6 29.Ng4+ Ke6 30.Qxb7+- 1-0

(242) Nivergenit - Kapello

Milan 1970

English opening

1.c4 e5 2.g3 d6 3.Bg2 Be7 4.Nc3 c6 5.d3 f5 6.Rb1 Nf6 7.e4 0-0 8.Nge2 Na6 9.b4 Qe8 10.0-0 Qh5 11.f3 fxe4 12.fxe4 [12.Nxe4 would be better] 12...Bh3 13.Bxh3 [13.Nf4 would be better Qxd1 14.Rxd1 Bd7 15.Nfe2] 13...Qxh3 14.Rf2 Ng4 15.Rg2 Rf7 16.Qe1 Raf8 17.Nd1 BLACK TO MOVE 17...Nxxh2 White resigned 18.Ne3 [18.Rxh2 Rf1+ 19.Qxf1 Rxf1#] 18...Nf3+ 0-1

(243) Wally Henschel - Mona May Karff

New York 1946

Colle system

1.d4 Nf6 2.Nf3 b6 3.e3 Bb7 4.Nbd2 e6 5.Bd3 d5 6.0-0 Nbd7 7.Qe2 Ne4 8.c4 Bd6 9.Ne1 0-0 10.Qf3 f5 11.Qe2 Rf6 12.f3 WHITE TO MOVE 12...Bxxh2+ 13.Kxxh2 Rh6+ 14.Kg1 Ng3 15.Qd1 [15.Qf2 Rh1#] 15...Qh4 16.Qc2 [16.f4 Qh2+ 17.Kf2 Nf6 18.Nef3 Ng4+ 19.Ke1 Qxxg2] 16...Nh1 White resigned 17.Be2 Qh2#

(244) G Abramovic- Mikhail Botvinnik

Soviet Union 1924

Dutch defence

1.d4 f5 2.Nf3 Nf6 3.c4 e6 4.Nc3 b6 5.Bg5 Be7 6.e3 Bb7 7.Bd3 0-0 8.0-0 Ne4 9.Bxe7 Qxe7 10.Rc1 Na6 11.a3 Rf6 12.Qa4 [12.Bxe4 would be better] 12...Nxc3 13.Rxc3 Bxf3 14.Qxa6 Rg6 15.g3 Qg5 16.Re1 Qh5 17.e4 BLACK TO MOVE 17...Qxxh2+ White resigned 18.Kxxh2 Rh6+ 19.Kg1 Rh1# 0-1

(245) Siegbert Tarrasch - Bernhard Richter

Halle 1883

Dutch defence

1.c4 f5 2. d4 e6 3.Nf3 Nf6 4.e3 b6 5.Bd3 Bb7 6.0-0 Bd6 7.Nc3 Nc6 8.e4 fxe4 9.Nxe4 Be7 10.Ne5 Nxd4 11.Nxf6+ Bxf6 12.Qh5+ [12.Re1 would be better] 12...g6 13.Bxxg6+ hxxg6 14.Qxxg6+ Ke7 15.Ng4 Qf8 16.Nxf6 Qxf6 17.Bg5 Ne2+ 18.Kh1 BLACK TO MOVE 18... Rxh2+ 19.Kxxh2 Rh8+ 20.Bh6 Qh4# 0-1

BRILLIANT QUEEN SACRIFICES

When you come to:

WHITE TO MOVE (or BLACK TO MOVE) stop and find the best move.

Obviously the first move in a critical position is a queen sacrifice.

Your task is to find what happens after the best defence.

Combinations with a queen sacrifice are among the most striking and memorable...

– Anatoly Karpov

A queen's sacrifice, even when fairly obvious, always rejoices the heart of the chess-lover

– Savielly Tartakower

To avoid losing a piece, many a person has lost the game

– Savielly Tartakower

We cannot resist the fascination of sacrifice, since a passion for sacrifices is part of a chess player's nature

– Rudolf Spielmann

No price is too great for the scalp of the enemy king

– Koblenz

(556) Dubois S - Steinitz W

London 1862

Italian opening

1.e4 e5 2.Nf3 Nc6 3.Bc4 Bc5 4.0-0 Nf6 5.d3 d6 6.Bg5 h6 7.Bh4 g5 8.Bg3 h5 9.Nxg5 h4
10.Nxf7 BLACK TO MOVE hxg3 11.Nxd8 Bg4 12.Qd2 Nd4 13.Nc3 Nf3+ 14.gxf3 Bxf3
15.hxg3 Rh1# 0-1

(557) Johann Nepomuk - Berger Frohlich

Graz (Austria) 1888

Ruy Lopez

1.e4 e5 2.Nc3 Nc6 3.Nf3 d6 4.Bb5 Bg4 5.Nd5 Nge7 6.c3 a6 7.Ba4 b5 8.Bb3 Na5 9.Nxe5
Bxd1 Any check is mate, so: 10.Nf6+! gxf6 11.Bxf7# that's called a clearance sacrifice,
opening up a line 1-0

(558) Kmoch H - NN

Vienna 1934

Ruy Lopez

1.e4 e5 2.Nf3 Nc6 3.Bb5 Nge7 4.0-0 g6 5.d4 Bg7 6.dxe5 Nxe5 7.Nxe5 Bxe5 8.Bh6 Bxb2
9.Nd2 c6 10.Rb1 Bd4 11.Nc4 Bc5 WHITE TO MOVE 12.Qd4 Black resigned. The mate
threat Nd6 allows Black's bishop to be overloaded and forked with the rook 12...Rg8 [12...
Bxd4 13.Nd6#] 13.Qxc5 1-0

(559) Angel - Buschke

New York 1940

Alekhine's defence

1.e4 Nf6 2.e5 Nd5 3.Nf3 d6 4.d4 Bg4 5.Be2 c5 6.0-0 Qb6 7.exd6 exd6 8.Re1 Be7 9.Bc4
Bxf3 10.Qxf3 Nf6 11.Nc3 Nc6 12.Nd5 Qd8 WHITE TO MOVE 13.Qxf6 gxf6 14.Nxf6+ Kf8
15.Bh6# 1-0

ABOUT THE AUTHOR

Mato is professional chess coach from South Australia. He is the owner of very popular YouTube Channel.

This YouTube channel is a great place for beginner and intermediate players to watch entertaining chess videos.

The channel features some of the greatest chess games of all time.

As chess is an exceptional mind game, it requires a large amount of skill and practice as well as strategy. There is more to chess strategy than many people think; with these free chess videos you can learn how to play like a champion in a very short period. Learn how to attack aggressively to win or how to spot key quiet moves and still move in for the win.



Find more about me, Mato Jelic, at:
http://www.chessschool.com.au/about_mato

Visit my YouTube Channel at:
<http://www.youtube.com/user/MatoJelic/featured>

Or send me an email at mato@chessschool.com.au

Follow your dreams, believe that you can do it and take action

“Follow your dreams, work hard, practice and persevere. Make sure you eat a variety of foods, get plenty of exercise and maintain a healthy lifestyle.”

Sasha Cohen

“In order to succeed, we must first believe that we can.”

Nikos Kazantzakis

“I hated every minute of training, but I said, ‘Don’t quit. Suffer now and live the rest of your life as a champion.’”

Muhammad Ali

“The will to win, the desire to succeed, the urge to reach your full potential ... these are the keys that will unlock the door to personal excellence.”

Confucius

